

In this issue:

Great news about the reduction in abstraction at the White hall pumping station!

An invitation to our film.

Progress with the control of invasive species

The expansion of riverfly monitoring

RBRA Chairman:

Dave Stimpson

Secretary:

Ian Knight

River Wardens:

Bob Thornton

News Letter:

Philip Hewett

Contact e-mail:

office@davestimpson.com

What's Beane Happening?

The newsletter of The River Beane Restoration Association – Issue 8 summer 2014

Welcome – Yes! It's really happening!

In our last newsletter we reported that a 90% reduction in abstraction at the Whitehall Pumping Station had been given a favourable response by OFWAT, *but it wasn't a final decision. It is now!* The Affinity Water plan has been signed off by the secretary of state and the Environment Agency has served Affinity Water with a notice of their intention to reduce the licence to an average of 2 mega litres a day (down from 18 mega litres). Last week Affinity Water sent us an e-mail to confirm that they had raised no objection – well, they wouldn't because it was their plan – and that means ***it is really happening!!!*** The picture to the right is our chairman, Dave Stimpson, when he heard the news. There will be a small reduction in 2015 and the main reduction will take place in 2018.



Monitoring work has already started so that we can chart the river's return to a healthy state (see the article below on river fly monitoring). Patience is still needed because it will be a few years yet before the upper Beane is restored to the beautiful river it should be with kingfishers, trout and otters thriving once more, and there is a lot of work to be done by organisations and volunteers. But at least now we know it will happen!

'On the Banks of the Beane'

You are all warmly invited to the premiere of the film about our very own river. Directed by Howard Berry from the University of Hertfordshire, and featuring a fascinating insight into the past life of the river, the problems it faces, and the efforts being made to restore it to its former glory. It is called '***On the Banks of the Beane***' and will be shown for the first time on October 9th at the Hertford Theatre. The programme for the evening will begin at 7.00 pm for a 7.45pm start and completely finish at 9.30. ***Please disregard the date published in our last newsletter which was inconvenient for our local MPs who would very much like to attend.***

NB CHANGE OF DATE.

THE FILM WILL NOW BE
SCREENED IN THE
HERTFORD THEATRE ON
THURS. 9TH OCTOBER

Tickets are free to RBRA members and their families. They can be obtained by e-mailing Angus Ramsey on angusandmary@btinternet.com, tel: 01438 880867, **by 31st August at the latest.** After this date any spare tickets will be returned to the theatre for sale to the public. Please give your name and postal address so tickets can be delivered to you. Non RBRA members can obtain tickets from the **Hertford Theatre Box Office, The Wash, Hertford, SG14 1PS**, Telephone **01992 531500**, or online at www.hertfordtheatre.com. Tickets cost £5 each. Please note there is no parking at the theatre but there is adequate public car parking nearby.

As well as MPs we have invited The Mayor of Hertford, County, District and Parish Councillors, Affinity Water, The Environment Agency, World Wildlife Fund and Herts & Middlesex Wildlife Trust. The film has been sponsored by a number of organisations and these will be acknowledged at the event.

If you request tickets and find you can't come please let us know so we can make them available through the box office.

**'Science of
Chalk Rivers'
a seminar
evening**

Thurs. Sept. 18th
7.00 – 10.00 pm
Affinity Water
Tamblin Way
Hatfield
AL10 9EZ

Speakers from:
The Geologists
Association
Imperial College
London
Bournemouth
University and
Affinity Water

Booking
essential as
places are
limited.

Please contact
Charlie Bell
Living Rivers
Officer at
Charlie.bell@hm
wt.org
01727 858901
(x245)

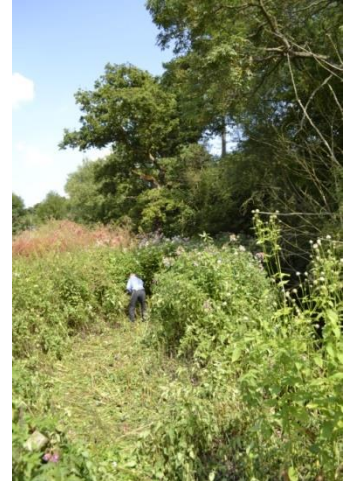
It will be a
fascinating
evening for
anyone
interested in
what makes
chalk streams so
unique.

Beane and Mimram Catchment Plan (CNTRL + click [here](#) to see the full plan.)

A message from Bob Thornton (antheaandbob@hotmail.com)

It has been a good year for plants of all kinds but not for giant hogweed along the Beane! Various agencies and individuals have had a real blitz on it through spraying and battles with plants in gardens. A special mention goes to the EA, Lafarge and the Woodhall Estate. It will be hard to find a flower head north of Waterford (unless you are on the Watton bypass), but let me know if you come across one. I would like to thank all those who have made a contribution towards the cost of my spray operation which has tidied up the gaps.

The Himalayan balsam has been attacked again, notably by a working party from our favourite water company, Affinity Water. Thank you to them and others who have been working away at their own corners of the river. The pictures to the right show an area being cleared.



Riverfly Monitoring

A message from Anthea Thornton (antheaandbob@hotmail.com)

The end of July saw the completion of one full year's riverfly monitoring on the River Beane. We celebrated (hurrah!) by adding 4 more monitoring sites to the project - so that we are now recording the invertebrates in the river from Walkern down to Hartham, in Hertford, where it flows into the Lea.

To help with the extra work we have welcomed 3 more trained investigators – Philip, and Anna and Iain – who join the veterans, Peter, Malcolm, Bob and Anthea.

As an example of what the data reveals, the following chart shows the differences seen over the year between two locations: in blue, a healthy stretch of river at Bulls Mill, near Waterford, and, in red, a slow-flowing, heavily silted area at the Lammas, Watton at Stone. No questions needed as to whether the Lammas is in need of restoration!

Angler's Score Index (the higher, the healthier) at 2 sites on the R.Beane

